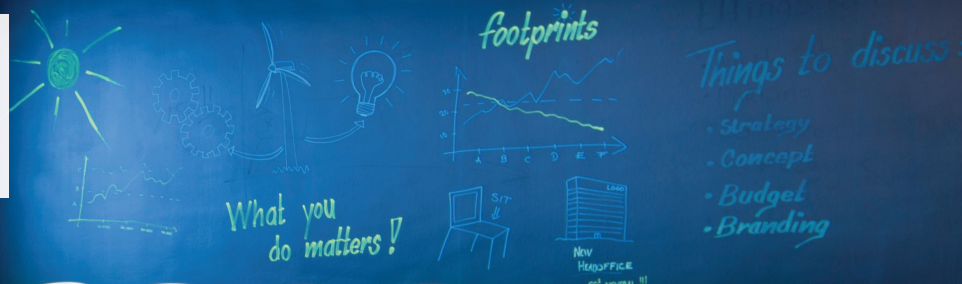




## Smart Meetings and Events



Adding Color to Life<sup>SM</sup>



AMSTERDAM AIRPORT  
SCHIPHOL

### Key Hotel Features

- › 150 modern bedrooms including 24 superior rooms and a disabled access room
- › The Live-Inn Room Lounge, Restaurant and outside Terrace
- › 24 hours a day guests can enjoy food and drinks from the Kiosk
- › 5 fully equipped meeting rooms with a capacity for up to 120 delegates
- › Free fitness room equipped with cardiovascular training equipment
- › 120 private parking spaces
- › Free WiFi Internet access throughout the hotel

### Location

- › Located just 8 minutes from Amsterdam Airport Schiphol terminal
- › Complimentary 24/7 Airport Shuttle Service
- › Airport's train station offers access to intercity services to all major cities in the Benelux region
- › Just 2 minutes from the A4/E19 motorway connecting the hotel to key cities in The Netherlands
- › 20 minutes from Amsterdam city centre or the tulips fields of Keukenhof in Lisse

### SMART Meetings and Events

- › We proudly offer SMART meeting service, emphasizing on Choice, Connect and Community for our bookers and delegates
- › Fully privatized meeting wing of 245 m<sup>2</sup> including 5 meeting rooms
- › 41 m<sup>2</sup> meeting foyer with purpose built lunch buffet and all day coffee station for meeting delegates
- › Built in AV and WiFi inclusive in rates.
- › All meeting areas feature natural daylight and full climate control
- › Packaged rates available ranging from day rates to meetings by the hour
- › Buffet restaurant can be semi-privatized for meeting groups to offer seated lunches and dinners

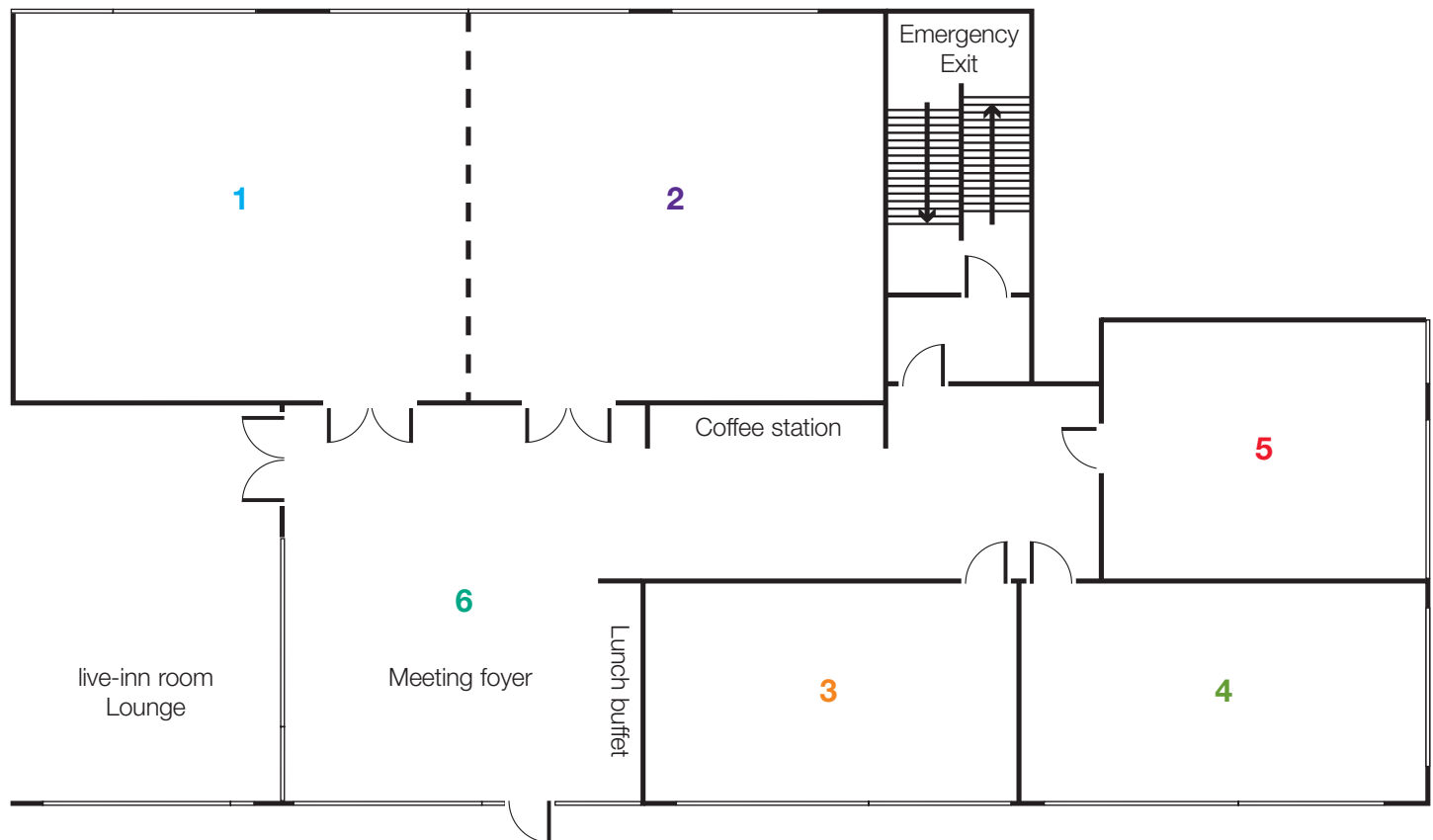
### Park Inn by Radisson Amsterdam Airport Schiphol

Beechavenue 142-160, 1119 PR Schiphol-Rijk  
 T: +31 (0)20 700 3800, F: +31 (0)20 700 3801  
 sales.amsterdam.airport@rezidorparkinn.com

[parkinn.com/hotel-amsterdamairport](http://parkinn.com/hotel-amsterdamairport)



# Meeting Rooms



Meeting Room	Boardroom	Classroom	U-shape	Reception	Theatre	Cabaret	Floor-to-ceiling-height in m	Length and width in m	sq.m.
1 Calatrava	24	30	20	60	60	32	2.85	9 x 7.3	65
2 Citer	22	26	18	50	50	26	2.85	8 x 7.3	57
Calatrava + Citer	55	60	50	120	120	60	2.85	17 x 7.3	122
3 Harp	12	20	10	n/a	25	20	2.85	7.2 x 3.8	28
4 Luit	12	20	10	n/a	25	20	2.85	7.2 x 3.8	28
5 Santiago	16	20	12	n/a	30	20	2.75	5.7 x 4.6	26
6 Meeting Foyer	n/a	n/a	n/a	72	n/a	n/a	2.75	5.8 x 7.1	41